

CMP-757-D-M5-4 Art. No. 253034



- Metal Ex d and Ex e stopping plugs
- Wide selection of thread types and sizes
- Operating temperature range -60 °C to +200 °C
- Global certification, IECEx, ATEX, cCSAus and UL

MY R. STAHL 757DA



Series 757 metal Ex d and Ex e stopping plugs with hexagon insert bit and head make it possible to temporarily or permanently seal unused drilled holes. There is a wide selection of different thread sizes and types available for this. They have global certification according to IECEx, ATEX, UL and cCSAus.

### Technical Data

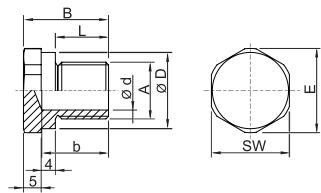
Explosion Protection	
Application range (zones)	1, 2, 20, 21, 22
IECEX gas certificate	IECEX CML 18.0177X
IECEX gas explosion protection	Ex db IIC Gb
IECEX firedamp certificate	IECEX CML 18.0177X
IECEX firedamp protection	Ex db I Mb
IECEX firedamp protection 2	Ex eb I Mb
ATEX gas certificate	CML 18ATEX1320X
ATEX gas explosion protection	II 2 G Ex db IIC Gb
ATEX firedamp certificate	CML 18ATEX1320X
ATEX firedamp protection	I M2 Ex db I Mb
ATEX firedamp protection 2	I M2 Ex eb I Mb
Notes	The product certificates can be downloaded from the manufacturer's homepage ( <a href="http://www.cmp-products.com">www.cmp-products.com</a> )
Ambient Conditions	
Ambient temperature	-60 °C ... +200 °C
Mechanical Data	
Degree of protection (IP)	IP66
Degree of protection note	IP67 and IP68 mounting according to the specifications of the manufacturer, CMP. The specified degrees of protection are only fulfilled if CMP installation accessories are used.
Degree of protection (IP) UL	IP66
Material	Stainless steel
Silicone-free	Yes
Drive	External hexagon
Width across corners	50.6 mm
Width across flats	46 mm
Outer diameter	50.6 mm
Thread size	M40

CMP-757-D-M5-4    Art. No. 253034

Mechanical Data

Thread length	15 mm
Thread pitch	1,5
Impact strength (IEC 62262)	IK10
Packaging unit	1
Weight	110 g
Weight	0.24 lb

Dimensional Drawings (All Dimensions in mm [inches]) – Subject to Alterations



- A = Thread size
- B = Length
- L = Thread length
- D = Outer diameter
- b = Dimension b
- d = Dimension d
- E = Width across corners
- SW = Hexagon socket width across flats

We reserve the right to make alterations to the technical data, dimensions, weights, designs and products available without notice. The illustrations cannot be considered binding.