

CMP-737-D-T1-M2-5 Art. No. 252999



- Metal Ex d and Ex e adaptors
- Wide selection of thread types and sizes
- Operating temperature range -60 °C to +200 °C
- Globally certified in accordance with IECEx, ATEX, UL and cCSAus

MY R. STAHL 737DB



The Series 737 metal Ex d and Ex e adaptors make it possible to adapt thread sizes and types. There is a wide selection of different versions available for this. They have global certification according to IECEx, ATEX, UL and cCSAus.

Technical Data

Explosion Protection

| | |
|---------------------------------|--|
| Application range (zones) | 1, 2, 20, 21, 22 |
| IECEX gas certificate | IECEX CML 18.0177X |
| IECEX gas certificate | IECEX SIM 15.0002X |
| IECEX gas explosion protection | Ex eb IIC Gb |
| IECEX dust certificate | IECEX CML 18.0177X |
| IECEX dust explosion protection | Ex ta IIIC Da |
| IECEX firedamp certificate | IECEX CML 18.0177X |
| IECEX firedamp protection | Ex db I Mb |
| IECEX firedamp protection 2 | Ex eb I Mb |
| ATEX gas certificate | CML 18ATEX1320X |
| ATEX gas explosion protection | Ex II 2 G Ex eb IIC Gb |
| ATEX dust certificate | CML 18ATEX1320X |
| ATEX dust explosion protection | Ex II 1 D Ex ta IIIC Da |
| ATEX firedamp certificate | CML 18ATEX1320X |
| ATEX firedamp protection | Ex I M2 Ex db I Mb |
| ATEX firedamp protection 2 | Ex I M2 Ex eb I Mb |
| cCSA certificate | 1055233 |
| CSA gas certificate | 1055233 |
| Marking ULus | Class I, Zone 1 AEx eb IIC T6 Class I, Div. 2, Groups A,B,C,D Class II, Div. 2, Groups F,G Class III, Div. 2 |
| Marking cUL | Class I, Zone 1 Ex eb IIC T6 Class I, Div. 2, Groups A,B,C,D Class II, Div. 2, Groups F,G |
| Notes | The product certificates can be downloaded from the manufacturer's homepage (www.cmp-products.com) |

Ambient Conditions

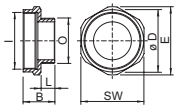
| | |
|---------------------|--------------------|
| Ambient temperature | -60 °C ... +200 °C |
|---------------------|--------------------|

CMP-737-D-T1-M2-5 Art. No. 252999

Mechanical Data

| | |
|------------------------------|---|
| Version | NPT/Metric |
| Degree of protection (IP) | IP66 |
| Degree of protection note | IP67 and IP68 mounting according to the specifications of the manufacturer, CMP. The specified degrees of protection are only fulfilled if CMP installation accessories are used. |
| Degree of protection (IP) UL | IP66 |
| Material | Nickel-plated brass |
| Silicone-free | Yes |
| Width across flats | 27 mm |
| Outer diameter | 29.7 mm |
| External thread | NPT1/2 |
| Thread size | NPT1/2 |
| Thread length | 15.3 mm |
| Thread pitch | 1,8143 |
| Thread pitch 2 | 1,5 |
| Internal thread | M20 |
| Protrusion length | 19.7 mm |
| Impact strength (IEC 62262) | IK10 |
| Packaging unit | 1 |
| Weight | 50 g |
| Weight | 0.11 lb |

Dimensional Drawings (All Dimensions in mm [inches]) – Subject to Alterations



O = External thread
I = Internal thread
SW = Width across flats
E = Width across corners
B = Length
L = Thread length

We reserve the right to make alterations to the technical data, dimensions, weights, designs and products available without notice. The illustrations cannot be considered binding.