



- Six basic enclosure sizes, optional inspection windows, direct and indirect cable entry possible
- International certification, wide temperature range, seawater-resistant light-metal enclosure
- Suitable series 8146/8150 connection-chamber enclosures possible

MY R. STAHL 8265A



R. STAHL series 8265 Ex d enclosures are ideal for motor control units, control boxes and terminal boxes. We equip these with various components, including sparking equipment, according to customer requirements. The cable entry can be direct or indirect. The large cover opening makes commissioning and maintenance easier. Single enclosures are ideal as components in Ex e control systems. Optional, large inspection window possible.

Technical Data

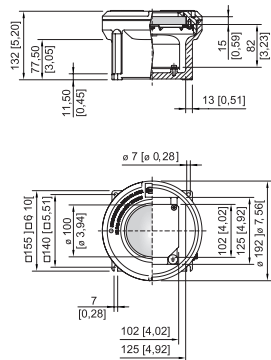
Explosion Protection	
Application range (zones)	1, 2, 21, 22
IECEX gas certificate	IECEX PTB 07.0027 U
IECEX gas explosion protection	Ex db eb IIC Gb
IECEX dust certificate	IECEX PTB 07.0027 U
IECEX dust explosion protection	Ex tb IIIC Db
ATEX gas certificate	PTB 06 ATEX 1023 U
ATEX gas explosion protection	Ex II 2 G Ex db eb IIC Gb
ATEX dust certificate	PTB 06 ATEX 1023 U
ATEX dust explosion protection	Ex II 2 D Ex tb IIIC Db
Certificates	ATEX (PTB), Brazil (ULB), China (NEPSI), IECEX (PTB), Taiwan (ITRI)
Declaration of conformity	Certificate of conformity (ATEX), China (CCC)
Ambient Conditions	
Ambient temperature	-50 °C ... +60 °C
Ambient temperature	-58°F ... +140°F
Mechanical Data	
Degree of protection (IP)	IP54
Note on degree of protection	IP66 with O-ring silicone -60 °C ... +60 °C
Enclosure material	Aluminium, copper-free, Seawater-resistant
Enclosure colour	without
Material note	Where there will be direct contact with seawater, a coating is recommended.
Clamping range max.	95 mm²
Cover	With inspection window
Design	Without entry
Width	155 mm
Width, inches	6.1 in
Height	132 mm

8265/02-0010 Art. No. 209700

Mechanical Data

Height in inches	5.2 in
Length	155 mm
Length in inches	6.1 in
Diameter	192 mm
Diameter inch	7.56 in
Enclosure size	2
Weight	3.95 kg
Weight	8.71 lb

Dimensional Drawings (All Dimensions in mm [inches]) – Subject to Alterations

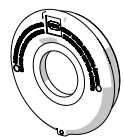


Size 2 enclosure with sight glass

Accessories

Cover with sight glass

Art. No.

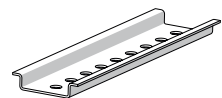


for size 2 enclosure
Visible cut-out in the sight glass dia. 102 mm [4.02 inch]

209698

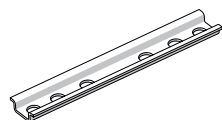
Mounting rail

Art. No.



TS35 length: 105 mm [4.13 inch]
for size 2 enclosure

143498

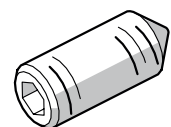


TS15 length: 105 mm [4.13 inch]
for size 2 enclosure

143497

Threaded pin

Art. No.



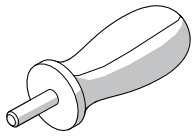
M5x16-A2 with hexagon socket and pointed tip

110216

8265/02-0010 Art. No. 209700

Box spanner

Art. No.



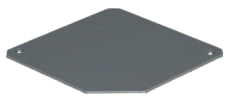
for opening a size 1, 2, 3, 4 enclosure cover
two box spanners are required

142059

Spare Parts

Mounting plate

Art. No.

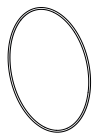


for size 2 enclosure
M5 x 8 screws are not included in the delivery

143484

O-ring

Art. No.



Silicone, for size 2 enclosure

305499

We reserve the right to make alterations to the technical data, dimensions, weights, designs and products available without notice. The illustrations cannot be considered binding.