

Contactors

80 A

8550/1-CT-GLS3-80-95-U2S-22 Art. No. 287708



- Reliable control of motors and other loads in motor starters and power distribution boards
- Reliable protection of motors in conjunction with the overload relay
- International approvals for worldwide use
- Ultimate flexibility thanks to wide-range coil voltages
- Large cable dia. range of the main terminals

MY R. STAHL 8550C



R. STAHL's Series 8550 contactor is a motor load contactor for use in motor starters up to 37 kW/50 hp at 400 or 480 V and in other power-based applications. It switches AC-3, AC-4, AC-5 and AC-6 loads just as reliably as AC-1 operating currents. Values are also available for DC-1, -3 and -5. With just three coil voltage ranges, control voltages of 20 to 280 volts are covered. Up to four auxiliary contacts are optionally available. Supplemented by the moulded case circuit breaker and overload relay also available in this series, motor starters up to 37 kW/50 hp at 400 or 480 V are available (other powers available on request).

Technical Data

| Explosion Protection | |
|---|--|
| Application range (zones) | 1, 2 |
| Application range (Zone) note | For use in Zone 21/22 when protected by Ex tb/tc enclosure |
| IECEX gas certificate | IECEX FMG 22.0005U |
| IECEX gas explosion protection | Ex db eb IIC Gb |
| ATEX gas certificate | FM 22 ATEX 0017 U |
| ATEX gas explosion protection | II 2 G Ex db eb IIC Gb |
| FMus certificate | FM22US0011U |
| cFM certificate | FM22CA0006U |
| Marking FMus | Class I, Div. 2, Groups A,B,C,D; Class I, Zone 1, AEx db eb IIC Gb; |
| Marking cFM | Class I, Zone 1, Ex db eb IIC Gb; Class I, Div. 2, Groups A,B,C,D; |
| Certificates | ATEX (FM), Brazil (ULB), Canada (FM), IECEX (FM), USA (FM) |
| Electrical Data | |
| Rated operational voltage | max. 690 V |
| Rated operational current | 80 A |
| Rated actuating voltage | 83 to 155 V AC/DC |
| Mechanical service life | 10,000,000 |
| Idle operating frequency | 5000 1/h |
| Operating frequency AC-3 | 500 1/h |
| Main contacts | 3-pole (3 NO) |
| Auxiliary contacts | 4 (2 NO + 2 NC) |
| 1st auxiliary function for AC rated voltage | - |
| 1st auxiliary function voltage max. DC | - |

Contactor

80 A

8550/1-CT-GLS3-80-95-U2S-22 Art. No. 287708

Electrical Data

| | |
|---|---|
| 1st auxiliary function for rated current max. | - |
| 2nd auxiliary function voltage AC | - |
| 2nd auxiliary function voltage max. DC | - |
| 2nd auxiliary function for rated current max. | - |

Ambient Conditions

| | |
|---------------------|--------------------|
| Ambient temperature | -25 °C ... +60 °C |
| Ambient temperature | -13 °F ... +140 °F |

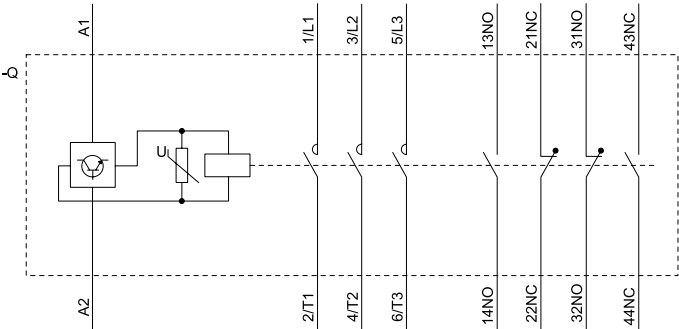
Mechanical Data

| | |
|--|------------------|
| Degree of protection (IP) | IP20 |
| Enclosure material | Thermoplast |
| Connection cross-section | 25 – 95 mm² |
| Connection cross-section AWG | 4 ... 4/0 AWG |
| Auxiliary contact connection cross section | 0.75 ... 2.5 mm² |
| Auxiliary contact connection cross section AWG | 18 ... 14 AWG |
| Width | 150 mm |
| Width, inches | 5.91 in |
| Height | 196 mm |
| Height in inches | 7.72 in |
| Depth | 336.6 mm |
| Depth in inches | 13.25 in |
| Weight | 4.2 kg |
| Weight | 9.26 lb |

Mounting / Installation

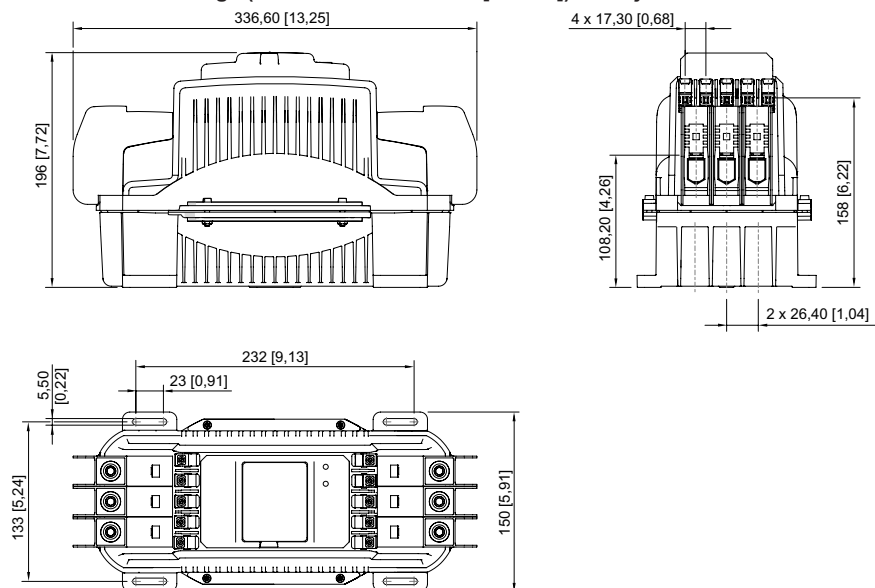
| | |
|--|----------------------|
| Tightening torque | 15 – 20 N · m |
| Tightening torque lbf in | 132 to 177 lbf in |
| Tightening torque auxiliary contact | 0.4 – 0.6 N · m |
| Tightening torque auxiliary contact lbf in | 3.54 ... 5.31 lbf-in |

Technical Drawings – Subject to Alterations



Circuit diagram of the device

Dimensional Drawings (All Dimensions in mm [inches]) – Subject to Alterations



We reserve the right to make alterations to the technical data, dimensions, weights, designs and products available without notice. The illustrations cannot be considered binding.